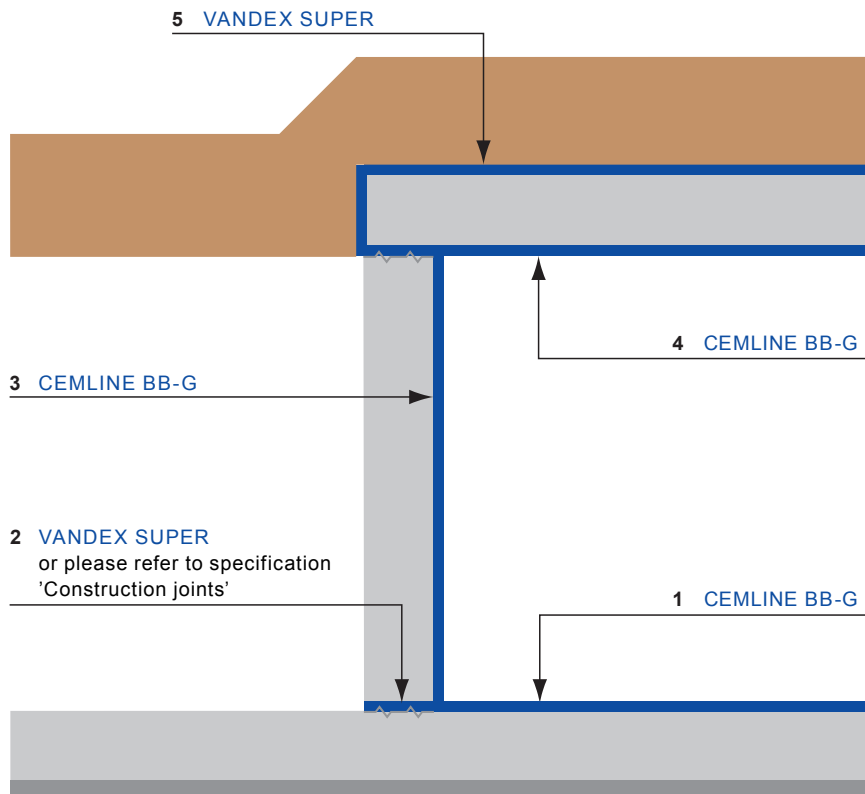


CLOSED POTABLE WATER RETAINING STRUCTURE – NEW CONSTRUCTION

Scope:

Waterproofing of potable water reservoirs, above or below ground.



Application Instructions

- 1 Apply two coats of CEMLINE BB-G to floor.
- 2 **Optional:** Apply VANDEX SUPER to all construction joints in accordance with the specification 'Construction Joints'.
- 3 Apply two coats of CEMLINE BB-G to the walls. Apply the second coat whilst the first is still green.
- 4 Apply two coats of CEMLINE BB-G to the soffit.
- 5 If the structure is earth covered, apply VANDEX SUPER to the deck slab.

Remark:

- Substrate adhesion strength > 1.5 N/mm²

For further technical details and consumptions refer to technical data sheet or consult a technical Vandex representative.

The information contained herein is based on our long-term experience and the best of our knowledge. We can, however, make no guarantee since for a successful outcome, all circumstances in an individual case must be taken into consideration. Indications of quantities required are only averages which in certain cases might be greater.

RPM/Belgium N.V.

H. Dunantstraat 11B · B-8700 Tielt · T.: +32 (0) 51 40 38 01

Alteco Technik GmbH

Raiffeisenstraße 16 · D-27239 Twistringen · T.: +49 (0) 42 43 92 95 0

Hermeta GmbH

Kanalstraße 11 · D-12357 Berlin · T.: +49 (0) 30 661 70 72

Monile France SARL

10, rue de la Lande · F-35430 St. Jouan des Guerets · T.: +33 (0) 608 86 96 56

Vandex International Ltd

Röitstrasse 6 · CH-4501 Solothurn · T.: +41 (0) 32 626 36 36

Vandex Isoliermittel-GmbH

Industriestraße 19–23 · D-21493 Schwarzenbek · T.: +49 (0) 41 51 89 15 0

Vandex AG

Röitstrasse 6 · CH-4501 Solothurn · T.: +41 (0) 32 626 36 46

Alteco Polymer Systems

436 Seventh Avenue, Suite 1850 · Pittsburgh, PA 15219 · T.: +1 216 258 8715